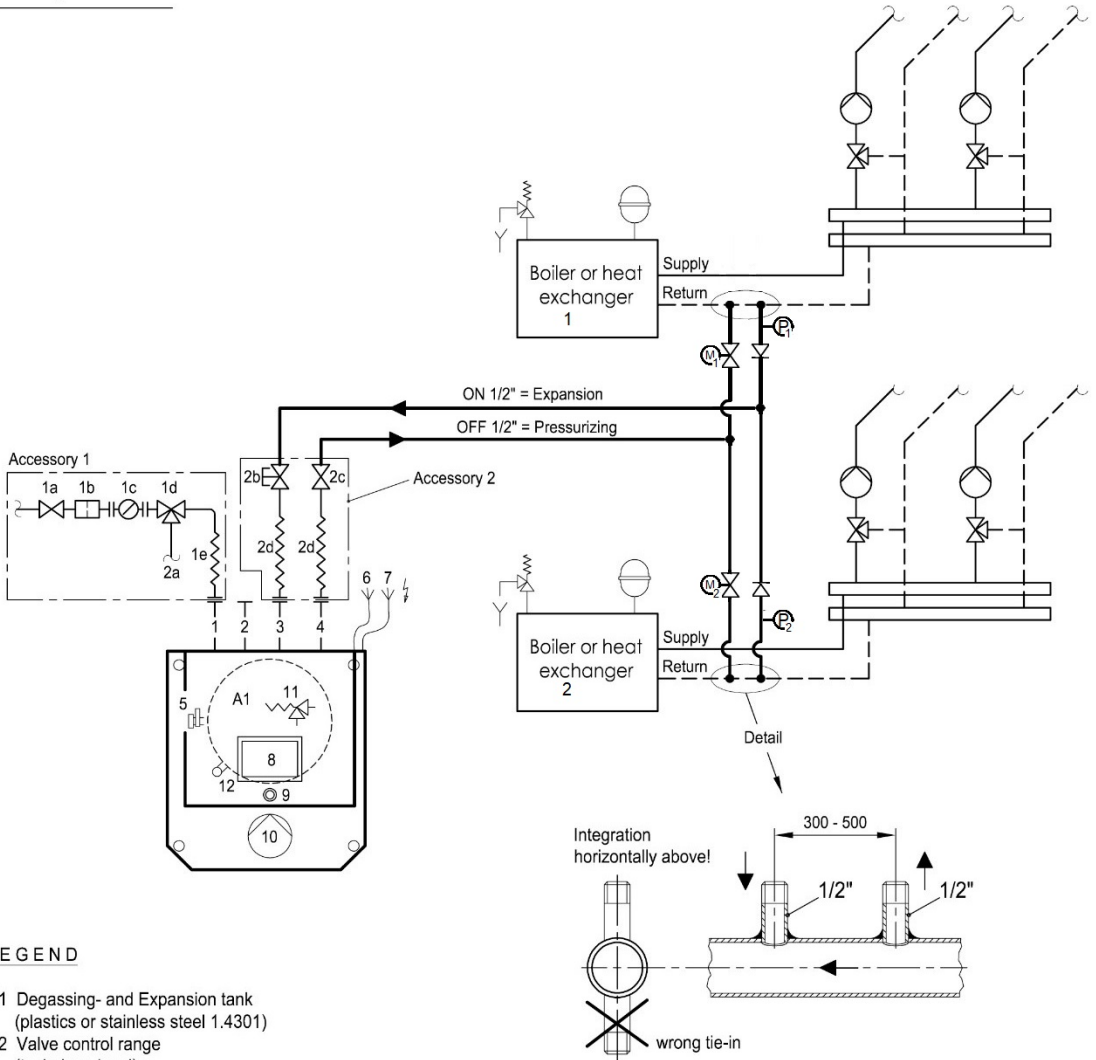


Integration :



LEGEND

- A1 Degassing- and Expansion tank (plastics or stainless steel 1.4301)
- A2 Valve control range (technique level)

- 1 Fresh water connection with magnetic valve $\frac{3}{4}$ "
- 2 Safety overflow DN50
- 2a System separator, on site
- 3 OFF $\frac{1}{2}$ " = pressurizing
- 4 ON $\frac{1}{2}$ " = expansion
- 5 Drain $\frac{3}{4}$ "
- 6 Power supply 230 VAC/50Hz (3-core for junction box, 10A fuse)
- 7 Potential-free collective alarm (max. 230 VAC, 3A)
- 8 AIR-SEP SmartControl (control unit)
- 9 Switch ON / OFF
- 10 Centrifugal pump (pressurizing)
- 11 Overflow valve
- 12 Watergauge glass with levelswitch (replaceable)
- 13 Cleaning hole (Accessory 4)
- 14 Insulation

AIR-SEP Accessory 1 - Connection fresh water

- 1a Shut-off valve $\frac{1}{2}$ "
- 1b Dirt trap $\frac{1}{2}$ "
- 1c Water meter
- 1d Protect valve RPZ type BA
- 1e Flex. hose 1,0 m $\frac{1}{2}$ "

AIR-SEP Accessory 2 - Connection system DN25

- 2b Protect shut-off valve $\frac{1}{2}$ "
- 2c Shut-off valve $\frac{1}{2}$ "
- 2d Flex. hose 1,0 m $\frac{1}{2}$ " (2x)

AIR-SEP Accessory 4 - Cleaning hole

- 13 Cleaning hole

AIR-SEP Accessory 6 - For Wallmounting

- 2 pcs. cantilever
- 4 pcs. rubber metal buffer with fastening screws

AIR-SEP Accessory 21 - Sheathing

Sheathing of powder-coated steel plate for AS-T 20/2-K and AS-T 20/2-M

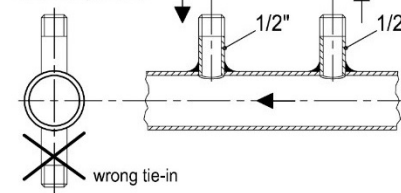
AIR-SEP Accessory 22 - Verkleidung

Sheathing of powder-coated steel plate for AS-T 48/4-M

AIR-SEP Heating & Cooling

- P1 & P2 Pressure sensor
- M1 & M2 Ball Valve
- Back valve

Integration horizontally above!



AIR-SEP type: 2 Sources

AS-T 20/2(4)-K AS-T 20/2(4) AS-T 48/4

PRESSURE MAINTENANCE, EXPANSION, DEGASSING and RESUPPLY

Dimension and Connection Diagram
Dimension subject to change

1049.07.2017 K

